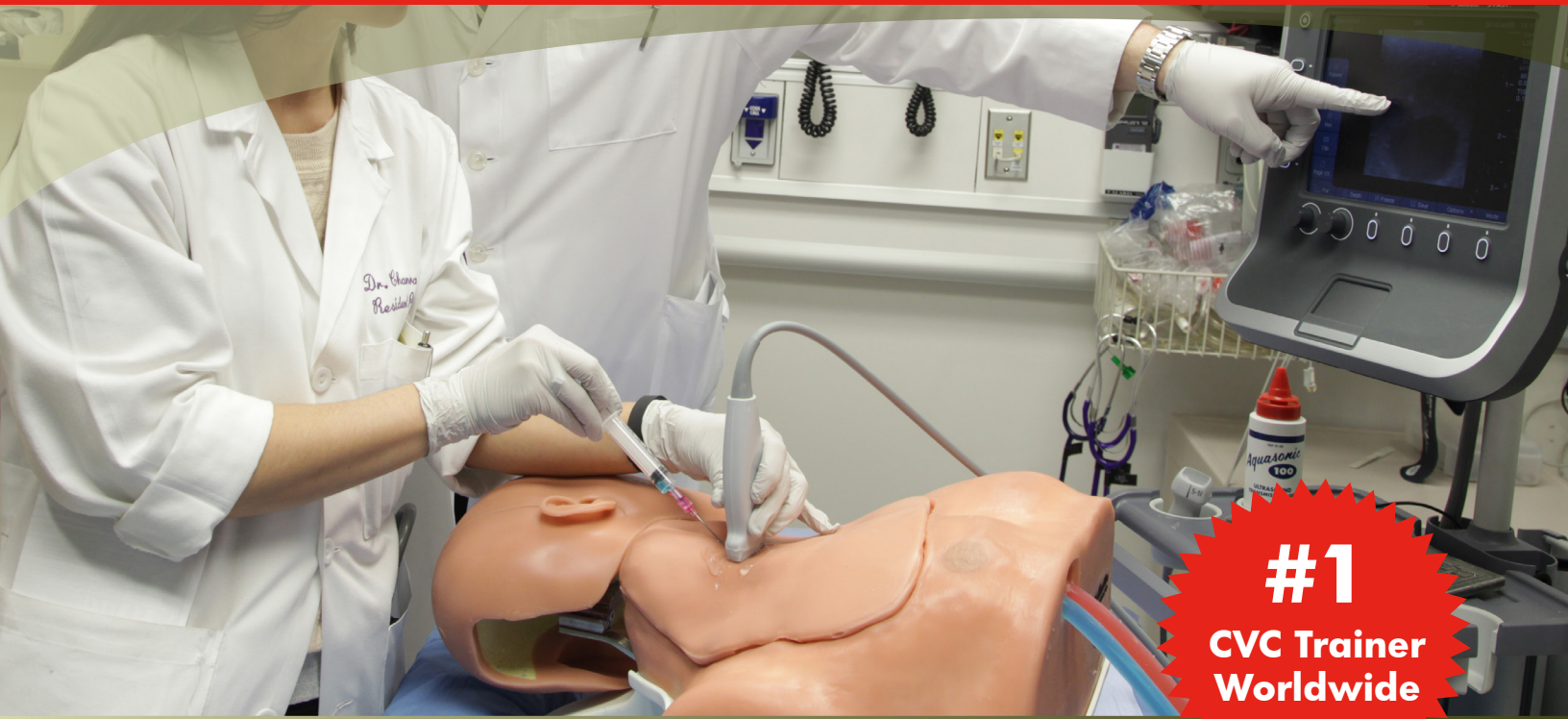


CentralLineMan[®] Trainer



VASCULAR ACCESS TRAINER



CentralLineMan is the most widely used Central Venous Catheterization training solution on the market today. This flexible system offers unsurpassed value with clinically relevant anatomy, ultrasound compatible tissues, and market-leading durability.

THE MOST FLEXIBLE PLATFORM

CentralLineMan allows you to interchange your CVC learning experience by adding tissue variations and the Articulating Head.

Replaceable tissues include:

- › Normal - typical anatomy
- › Obese - thicker skin and deeper vessels
- › Advanced - anatomical anomaly

SYSTEM FEATURES

- › Complete procedural practice at three access sites; Internal Jugular, Subclavian, Supraclavicular.
- › Anatomically correct, ultrasound compatible, human torso with all relevant landmarks
- › Replaceable tissue variations allow for a progressive development of learner skills.
- › Self-sealing tissues provide the greatest value, in frequency of needle sticks and full catheterizations per access site.
- › Needle sticks and full catheterizations do not degrade the image acuity.
- › Arterial/venous fluid provides immediate feedback and simulates complications
- › Pre-filled tissues (blue venous and red arterial fluid) are easy to refill with provided fluid when necessary.



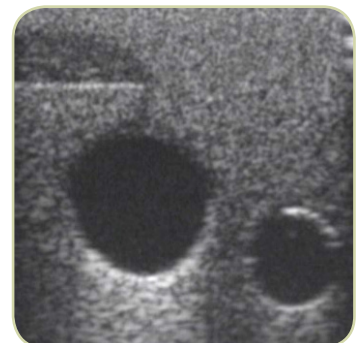
Ultrasound Guided with Appropriate Landmarks



Self-sealing, Durable Tissue for Many Uses



Full Central Venous Catheterization



Realistic Ultrasound Imaging

LANDMARKS AND ANATOMY

CentralLineMan features clinically relevant landmarks and anatomy that are palpable and visible under ultrasound. These include:

Palpable Landmarks

- › Upper torso and neck
- › Trachea
- › Superior vena cava
- › Sternocleidomastoid muscle
- › Lateral border of the first rib
- › Sternal/clavicular heads of the sternocleidomastoid muscle
- › Clavicle
- › Sternal notch
- › Manubrium
- › Right atrium
- › Right ventricle

Ultrasoundable Anatomy

- › Internal Jugular Vein
- › Subclavian Vein
- › Carotid Artery
- › Subclavian Artery

CENTRALINEMAN SYSTEM

CentralLineMan System
with Articulating Head

PART #: CLM-51

CentralLineMan System
w/o Articulating Head

PART #: CLM-50

CentralLineMan System Components

- › **CentralLineMan** Body Form
- › Articulating Head (optional)
- › Replaceable Tissue
- › Simulated Arterial/Venous Blood
- › Pulse Bulb
- › Venous Pressure Regulator
- › Carrying Case
- › User's Guide



FOR MORE INFORMATION:

Visit our web site to view videos of all of our products.



SAVE ON TRAINING PACKAGES

CentralLineMan Package

PART #: CLTP-51 (WITH ARTICULATING HEAD)

PART #: CLTP-50 (WITHOUT ARTICULATING HEAD)

- › **CentralLineMan** Trainer
- › One extra replaceable tissue
- › 25 non-sterile guidewires

Deluxe CentralLineMan Package

PART #: DCLTP-51 (WITH ARTICULATING HEAD)

PART #: DCLTP-50 (WITHOUT ARTICULATING HEAD)

- › **CentralLineMan** Trainer
- › Normal, obese and advanced replaceable tissues
- › 25 non-sterile guidewires

Vascular Access Training Package

PART #: CVC-51 (WITH ARTICULATING HEAD)

PART #: CVC-50 (WITHOUT ARTICULATING HEAD)

- › **CentralLineMan** Trainer
- › **FemoraLineMan** Trainer
- › Extra replaceable tissue for each

CVC Family Training Package

PART #: VAFP-31 (WITH ARTICULATING HEAD)

PART #: VAFP-30 (WITHOUT ARTICULATING HEAD)

- › **CentralLineMan** Trainer
- › **FemoraLineMan** Trainer
- › **VascularAccessChild** Trainer
- › Extra replaceable tissue for each

FLEXIBLE PLATFORM

Add these accessories to create the most flexible training platform available.

CentralLineMan Replaceable Tissues

NORMAL TISSUE

PART #: CLMT-50

Practice complete blind/landmark or ultrasound-guided central venous catheter insertion skills.

NEW! OBESE TISSUE

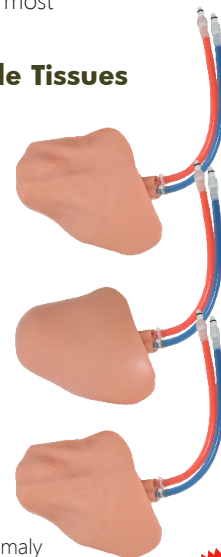
PART #: CLMOT-50

Practice on patients with thicker tissue layers, minimal landmarks, and deeper vessels—where palpation, ultrasound, and cannulation are more difficult.

NEW! ADVANCED TISSUE

PART #: CLMAT-50

Practice the advanced skills necessary during emergent situations—inserting a line on a patient with an anatomical anomaly where access options are limited.



NEW

Patient Positioning Tray

PART #: PPT-10

Perform line insertion or nerve blocks on Simulab trainers positioned exactly how patients would be for the procedures.



CentralLineMan Non-Sterile Guidewires

(25 pk) **PART #: NSG-10**

Distributed by Abacus dx

1800 ABACUS (AUS) 0800 222 170 (NZ) | info@abacusdx.com | www.abacusdx.com

abacus dx